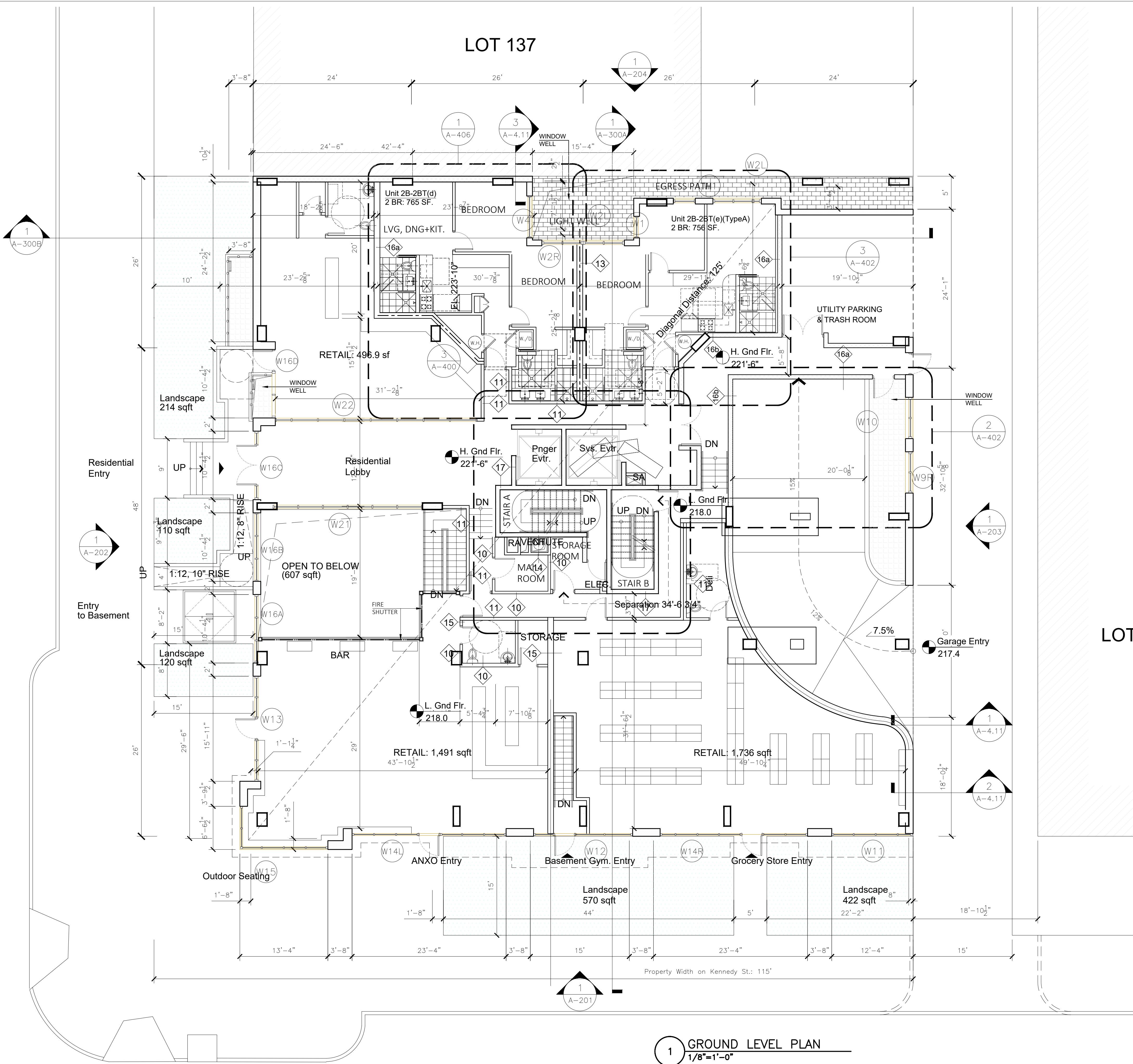


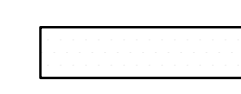




LOT 137



1 GROUND LEVEL PLAN
1/8"=1'-0"

3 KEYNOTES

Total Green Area Needed:
0.3x115'x115'=0.3x13225= 3968 sqft
Green Area @ Ground Floor: 1436 sqft, max.
Green Area @ Roof Terrace: 2538 sqft

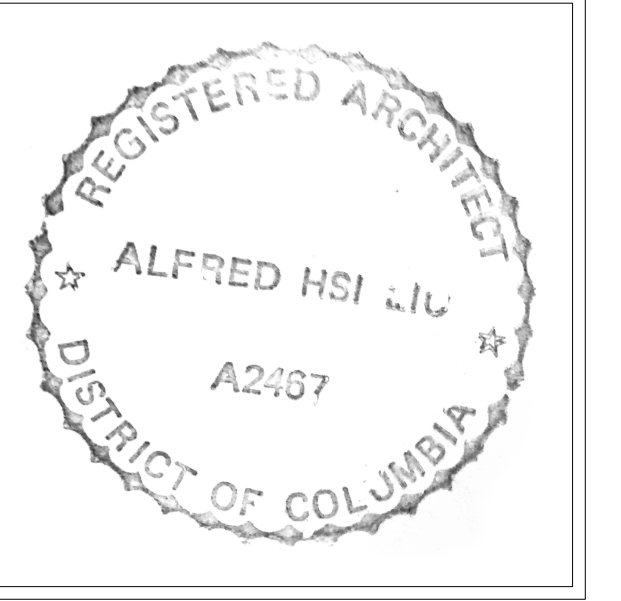
-  BRICK WENEER EXTERIOR WALL
-  CONCRETE WALL
-  CMU WALL
-  PARTITION TAG
-  WINDOW TAG

2 SHEET NOTES/LEGEND



Owner:
Coloma River Capital
Address:
1140 3rd Street NW,
Suite 2151,
Washington, DC 20002
Charles Paret
202-838-6941

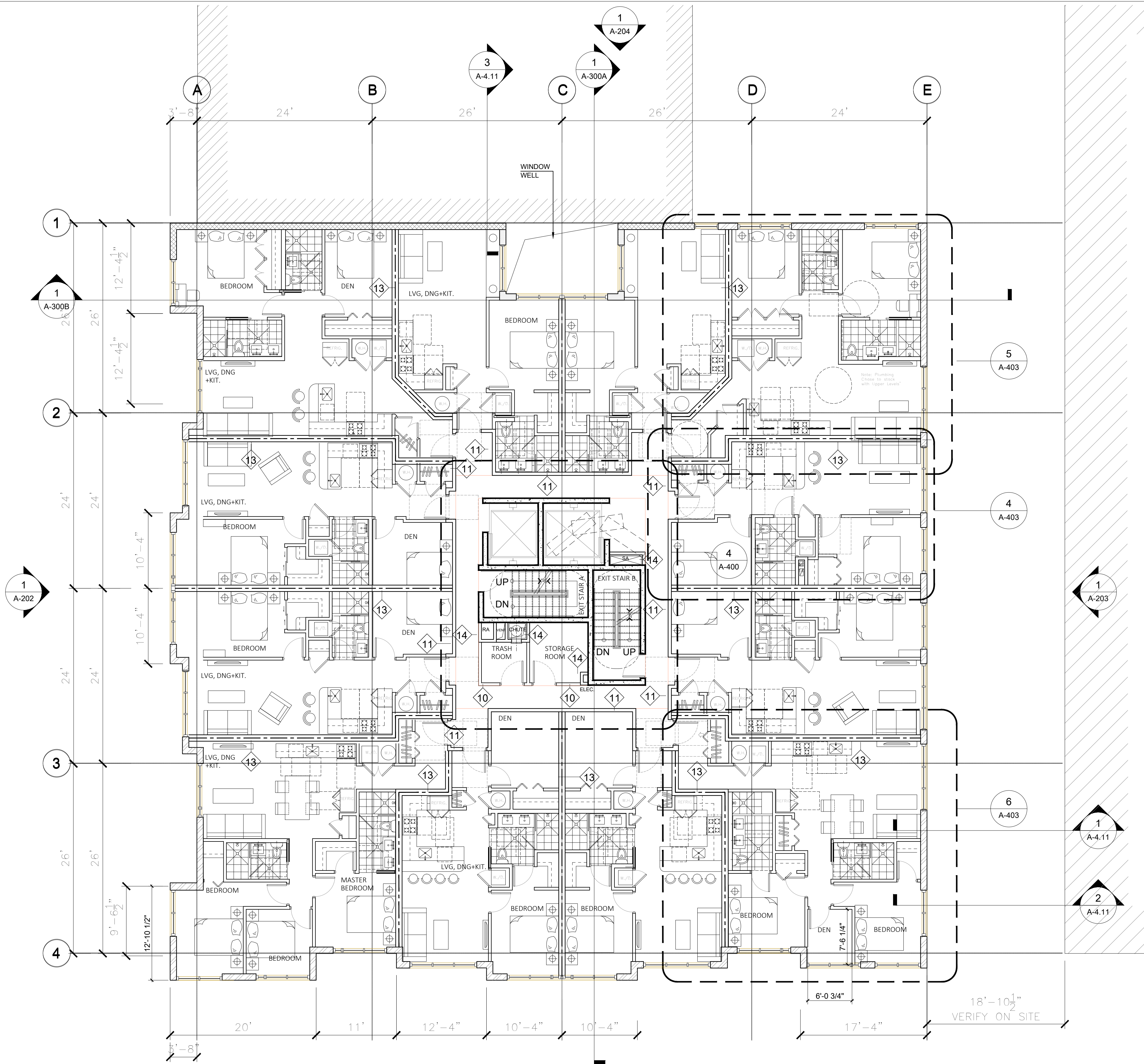
71 KENNEDY STR. NW
5505 1st St. NW / 67-71 Kennedy St. NW
Washington, DC 20011
PROJECT MANAGER: PENG WANG



SCALE: 1/8"=1'-0"
DATE:
PROJECT NUMBER:


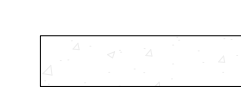



SHEET TITLE
Ground Floor Plan

SHEET NUMBER
A-103

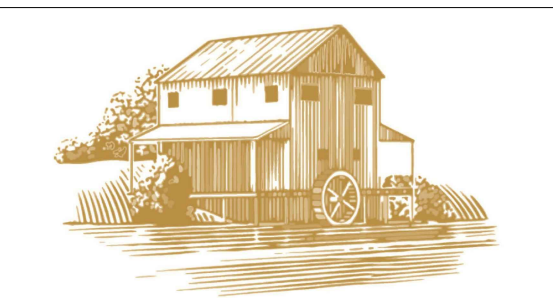


1 2ND FLOOR PLAN
1/8"=1'-0"

1
A-201

-  EXTERIOR WALL - METAL PANELS
-  CONCRETE WALL
-  CMU WALL
-  PARTITION TAG
-  WINDOW TAG

2 SHEET NOTES/LEGEND



COLOMA RIVER CAPITAL

Owner:
Coloma River Capital
Address:
1140 3rd Street NW,
Suite 2151,
Washington, DC 20002
Charles Paret
202-838-6941

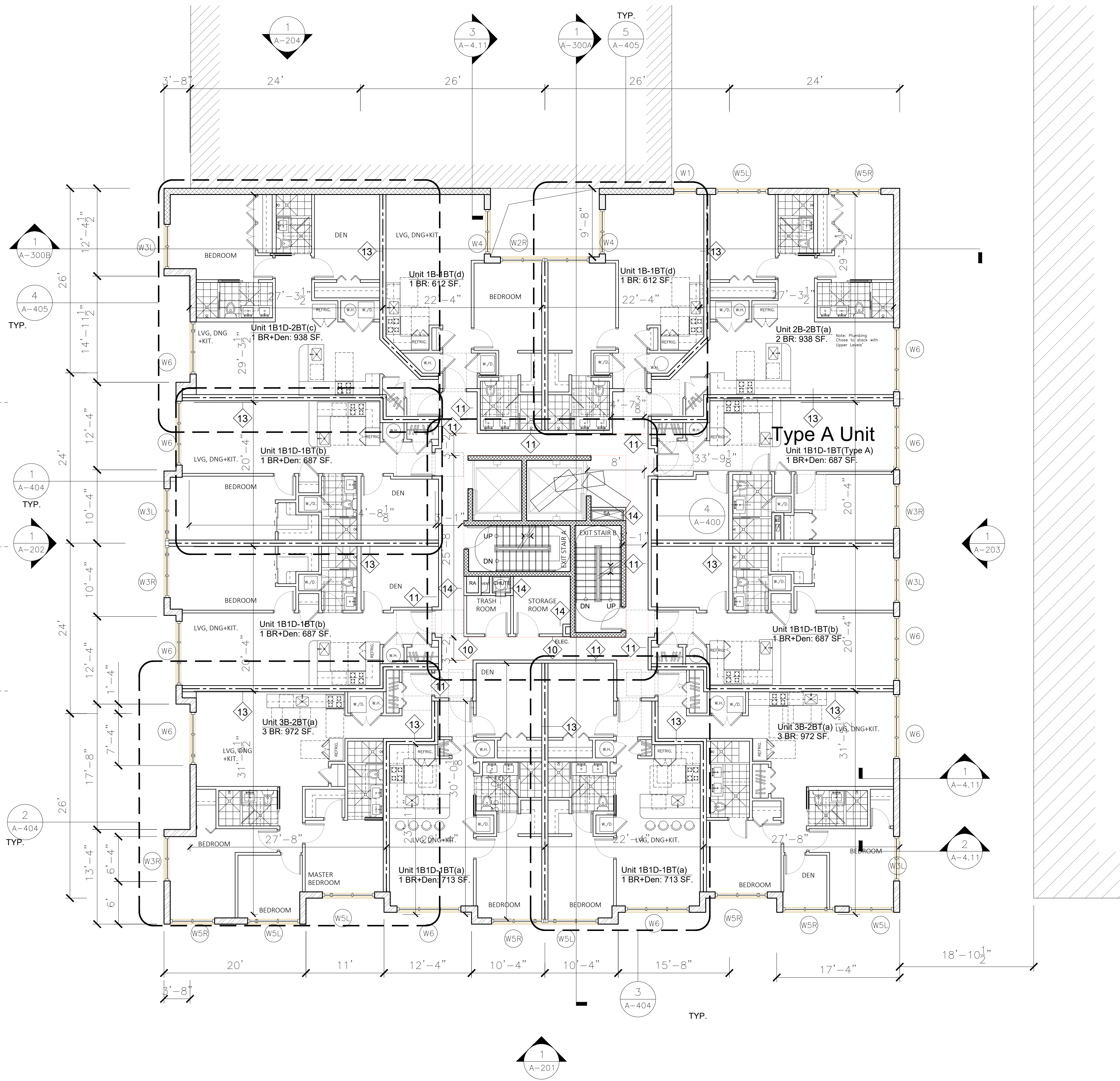
71 KENNEDY STR. NW
5505 1st St. NW / 67-71 Kennedy St. NW
Washington, DC 20011
PROJECT MANAGER: PENG WANG



SCALE: 1/8"=1'-0"
DATE:
PROJECT NUMBER:






SHEET TITLE
2nd Floor Plan

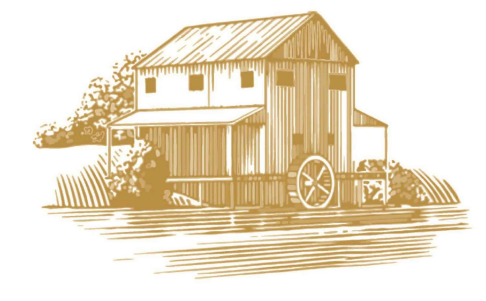
SHEET NUMBER
A-104



1 3RD-4TH FLOOR PLAN
1/8"=1'-0"

2 SHEET NOTES/LEGEND

-  EXTERIOR WALL - METAL PANELS
-  CONCRETE WALL
-  CMU WALL
-  PARTITION TAG
-  WINDOW TAG



COLOMA RIVER CAPITAL

Owner:
Coloma River Capital
Address:
1140 3rd Street NW,
Suite 2151,
Washington, DC 20002
Charles Paret
202-838-6941

71 KENNEDY STR. NW
5505 1st St. NW / 67-71 Kennedy St. NW
Washington, DC 20011
PROJECT MANAGER: PENG WANG



SCALE: 1/8"=1'-0"
DATE:
PROJECT NUMBER:

SHEET TITLE
3rd-4th Floor Plan

SHEET NUMBER
A-105



COLOMA RIVER CAPITAL

Owner:
Coloma River Capital
 Address:
 1140 3rd Street NW,
 Suite 2151,
 Washington, DC 20002
 Charles Paret
 202-838-6941

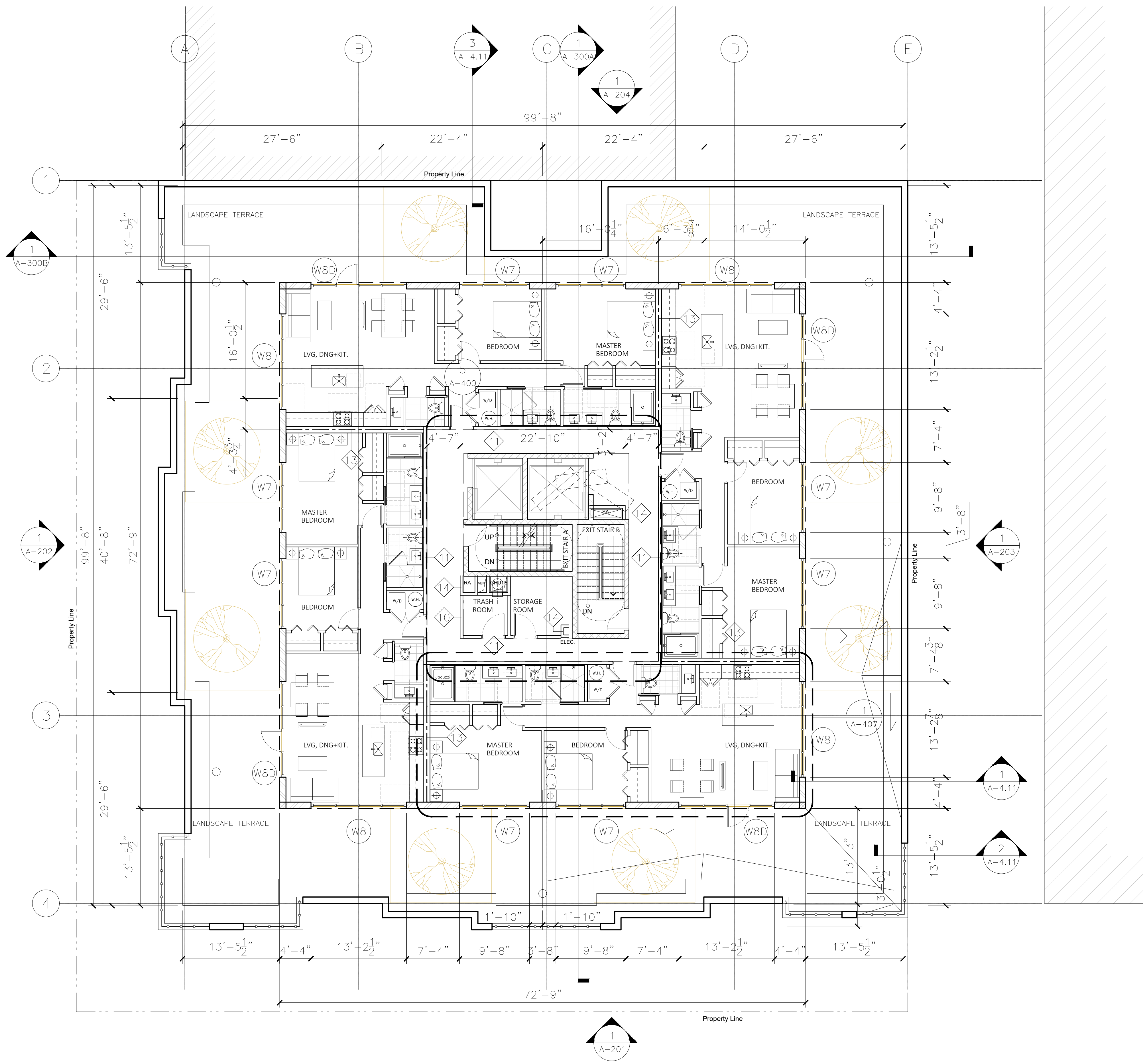
71 KENNEDY STR. NW
 5505 1st St. NW / 67-71 Kennedy St. NW
 Washington, DC 20011
 PROJECT MANAGER: PENG WANG



SCALE: 1/8"=1'-0"
 DATE:
 PROJECT NUMBER:

SHEET TITLE
**Penthouse
 Floor Plan**

SHEET NUMBER
A-106



- EXTERIOR WALL - METAL PANELS
- CONCRETE WALL
- CMU WALL
- PARTITION TAG
- WINDOW TAG

1 PENTHOUSE FLOOR PLAN
 1/8"=1'-0"

2 SHEET NOTES/LEGEND